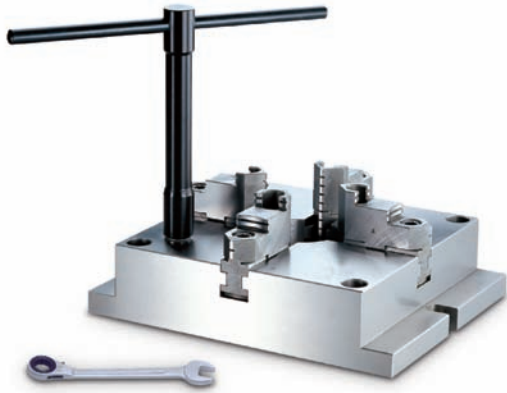


### 方型超薄夾盤

### MC SUPER THIN SQUARE CHUCKS



#### 使用範例 OPERATION EXAMPLE

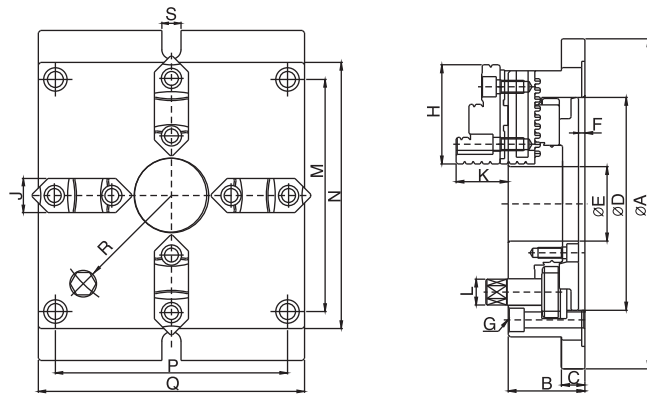


#### MC 附硬爪

- ◎ 1.MC均為定寸研磨方式；任何相同規格之方型夾盤W,X,Y,Z各點之高度公差為0.05mm以內。
- ◎ 2.MC規格均可替換生爪，作不規則形狀之加工，以替代中心機大量治具，更經濟、方便。
- ◎ 3.硬爪重複夾持之精度公差為0.02mm以內。
- ◎ 4.側邊平行校正後，硬爪夾持之平行公差為0.05mm以內。

#### MC SQUARE CHUCKS

- ◎ 1.MC chucks are precisely ground,the tolerances of W,X,Y,Z among chucks are with in 0.05mm.
- ◎ 2.Soft jaws can be used alternatively for machining special shaped work pieces,to substitute for designing and making a lot of jigs for this purpose.
- ◎ 3.The repetitive gripping accuracy with the hard jaws are with in 0.02mm.
- ◎ 4.Parallel gripping accuracy with hard jaws can be controlled with in 0.05mm after aligning sides of chucks.



尺寸圖 / DIMENSIONS

#### 規格 / Specification

單位/UNIT:mm

型式 / 規格 MODEL/SPEC.	A	B	C	D	E	F	G	H	J	K	L
MC-06	215	57	18	130	40	5.5	4-M10x1.5P	68	26	39	14
MC-08	250	65	20	160	55	6	4-M12x1.75P	82	28	43	17
MC-10	310	72	22	200	70	6	4-M14x2P	93	32	50	21
MC-12	380	85	25	260	100	7	4-M16x2P	118	40	56	23

型式 / 規格 MODEL/SPEC.	M	N	P	Q	R	S	把握範圍 Max.Gripping Diameter		淨重 Weight (kg)
							外徑把握 O.D.Clamping	內徑把握 I.D.Clamping	
MC-06	144	165	144	165	66	18	Ø4-Ø128	Ø55-Ø128	11.4
MC-08	174	200	174	200	83	18	Ø5-Ø162	Ø62-Ø162	18.6
MC-10	218	250	218	250	104	18	Ø6-Ø200	Ø72-Ø200	31.6
MC-12	274	310	274	310	135	22	Ø10-Ø265	Ø90-Ø265	56.6

